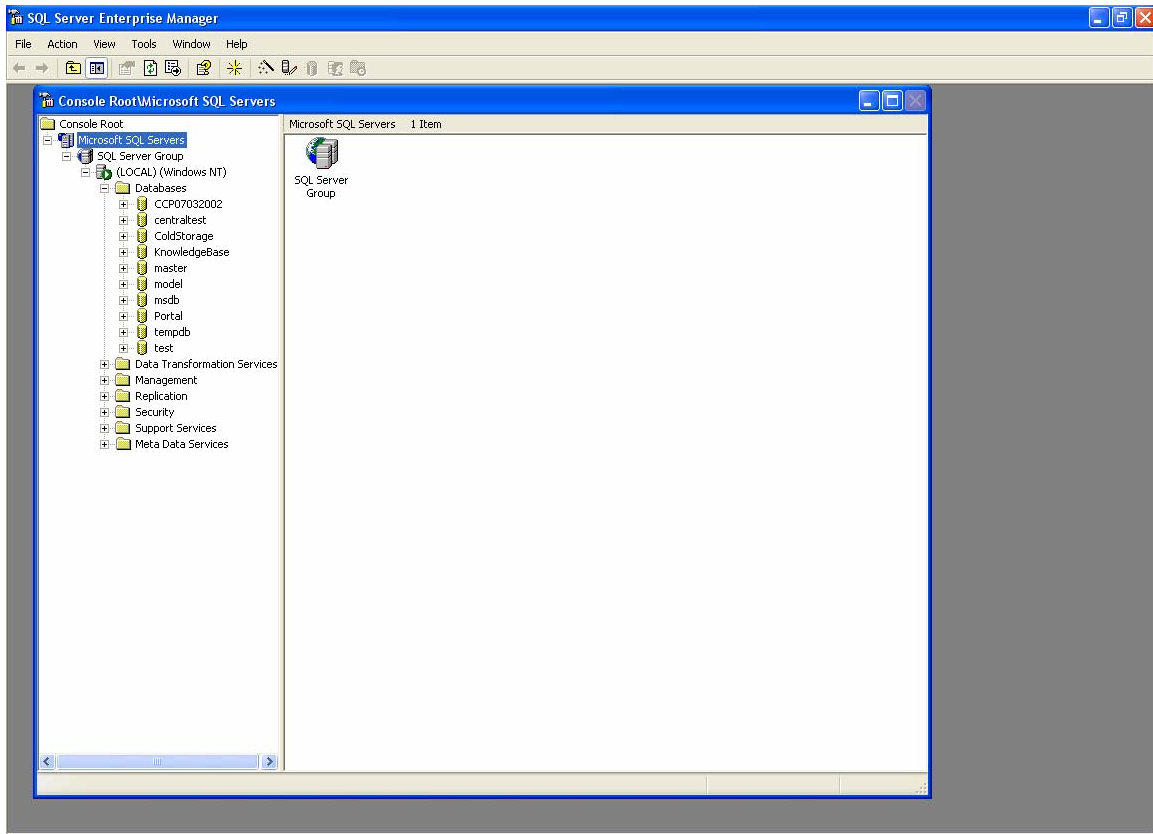


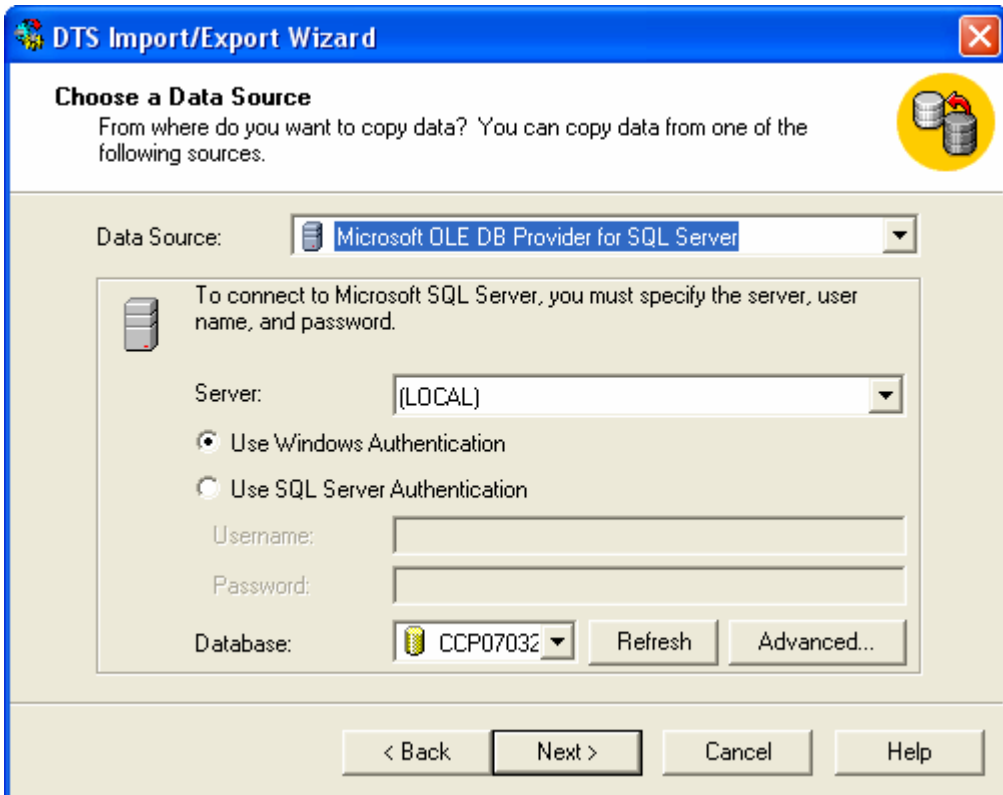
Open Enterprise Manager. Find the database, and right-click on it and choose “All Tasks” and then “Export Data”



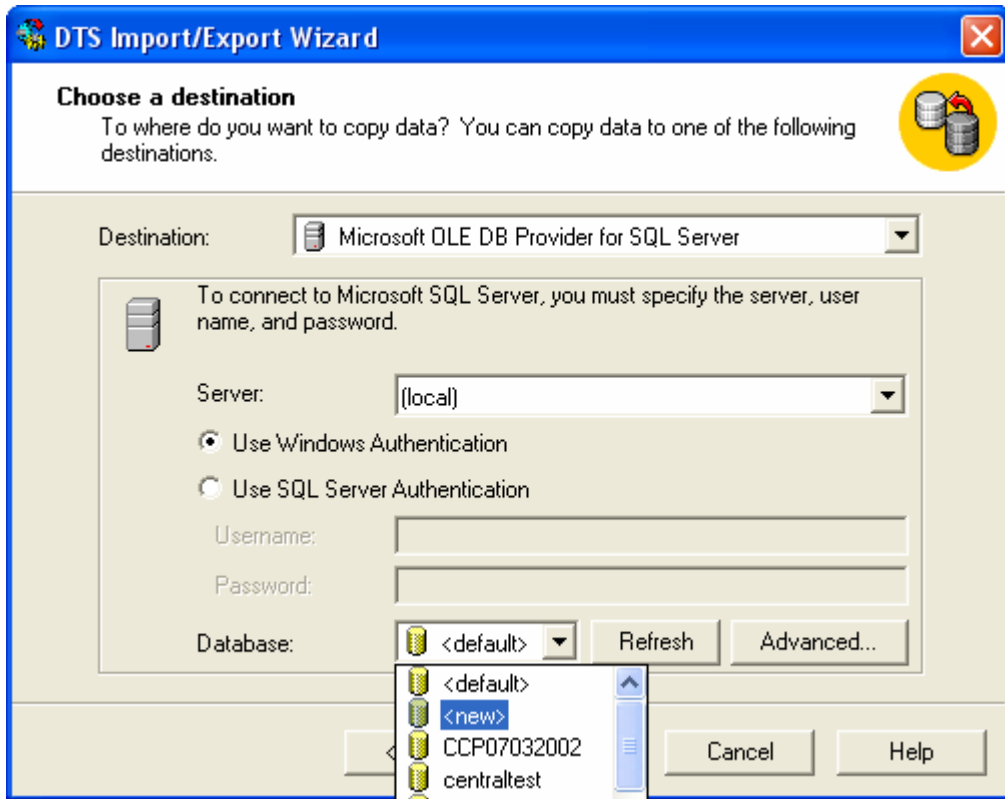
The following wizard will appear



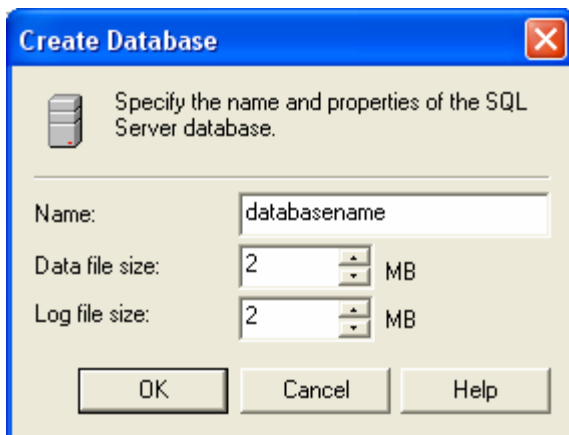
Click Next



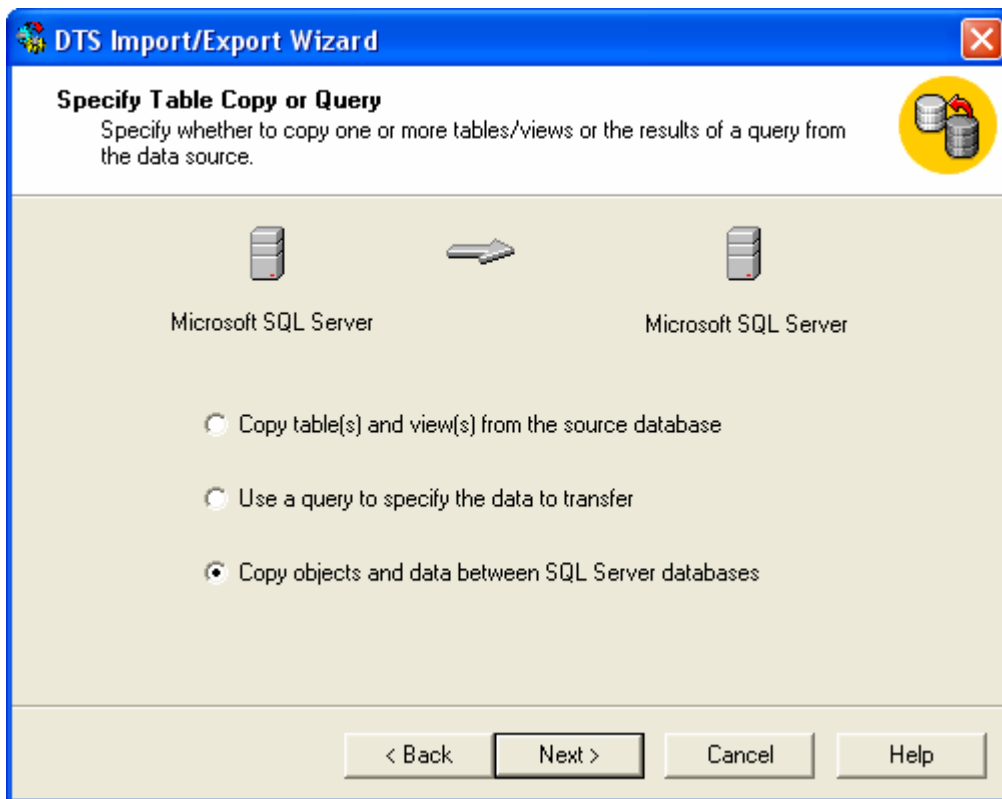
Make sure the database you are copying is listed in the Database drop-down box. Click Next.



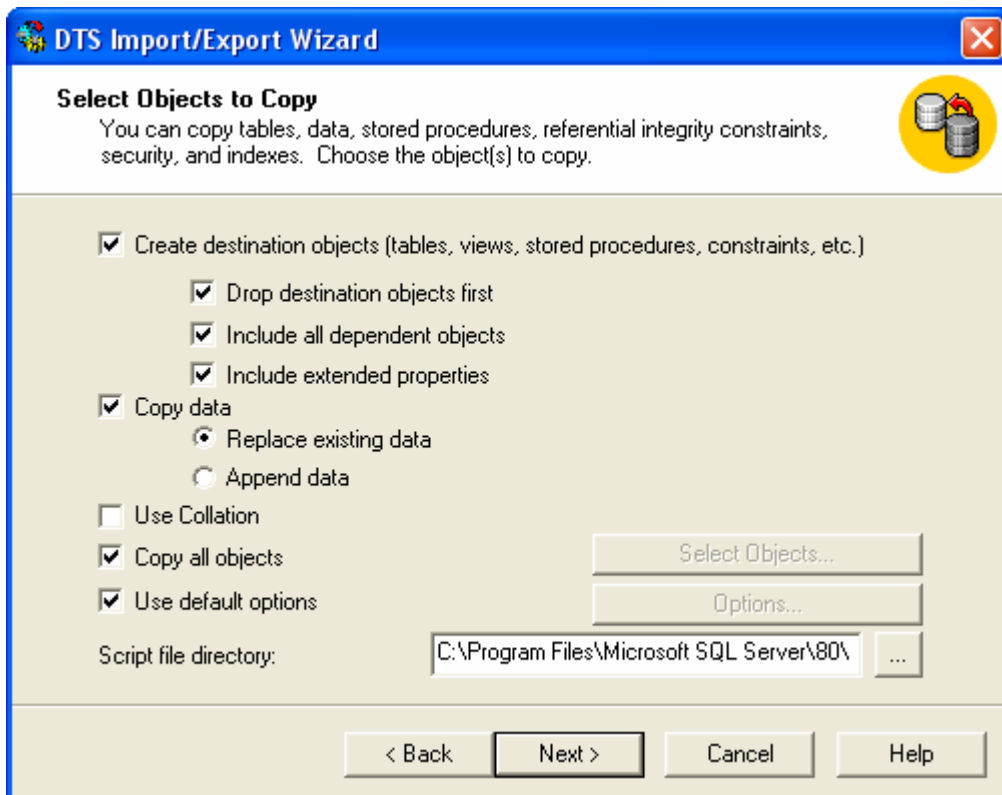
On the destination screen, select <new> from the dropdown. The following screen will appear.



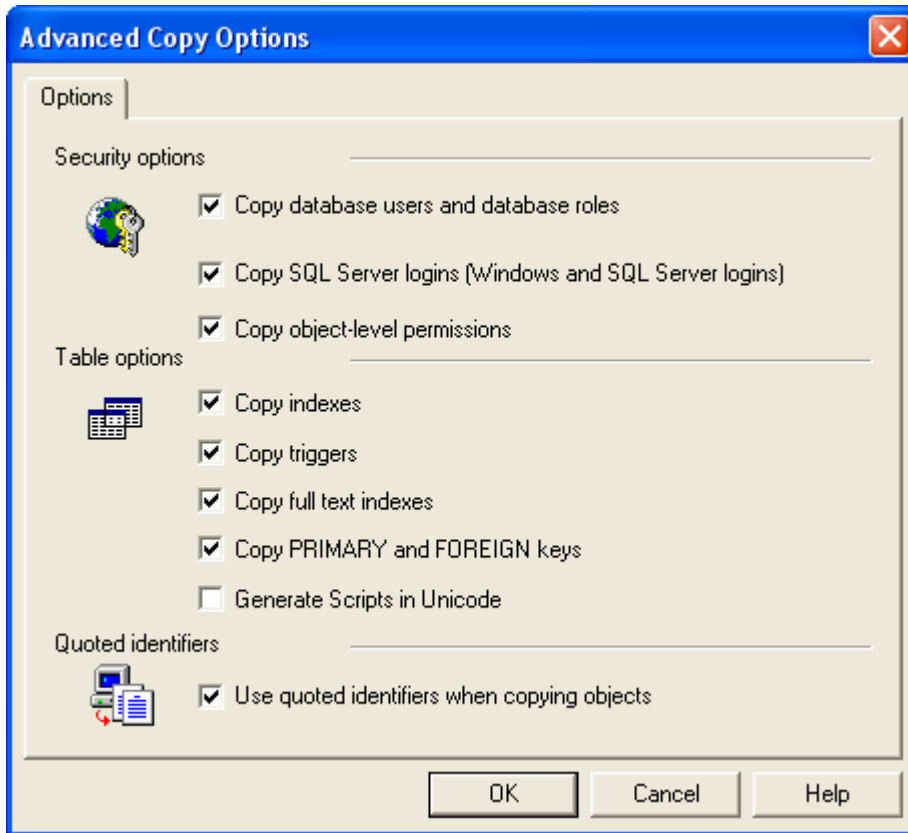
Give the database a name and click OK



Select to copy objects and data between SQL Server databases

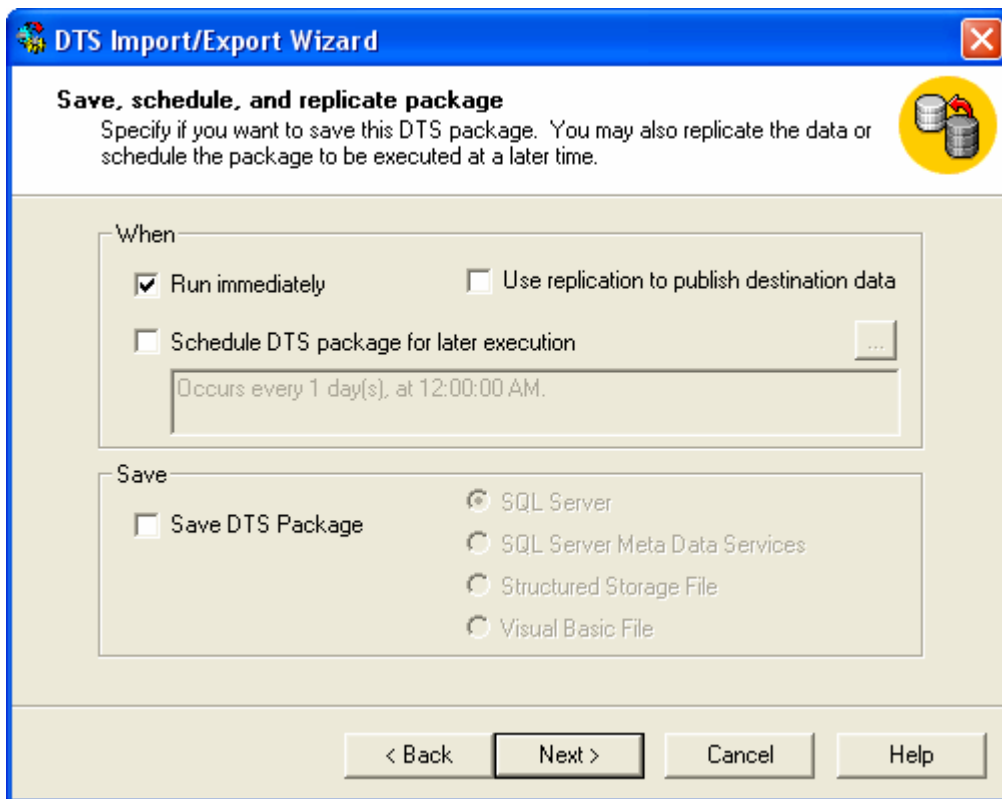


Check the “Include all dependent objects”. The uncheck “Use default options”. Now click the “options” button. You will see this screen.



Check “Copy SQL Server logins” and click OK.

Then click next.



Click next until the procedure starts and database copying begins.

When it is finished, modify your profile to point to the new database.